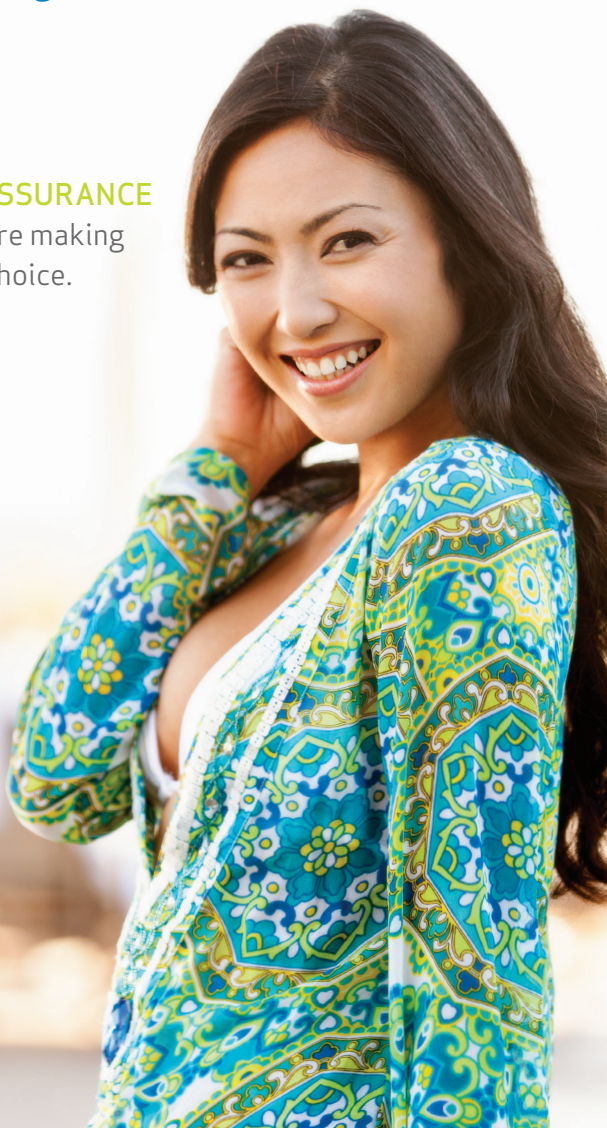


LIMITED WARRANTIES

for **SALINE FILLED** Breast Implants

Standard Advantage & Enhanced
Advantage Limited Warranties

Our **REASSURANCE**
that you're making
a great choice.



Make life more beautiful™

NOTHING IS **MORE IMPORTANT** than your well-being before, during **and after** breast surgery

At Mentor, we pride ourselves in the development of medical products based on the finest science, research and manufacturing. And we stand behind those products with Limited Warranties that give patients the confidence that they, and their surgeons, have made the right choice.

MENTOR was the **FIRST COMPANY** to offer patients a limited warranty on all our breast implants.

The first step: **BECOME INFORMED**

Learn about saline filled breast implants and financial assistance* available through the Mentor Limited Warranties.

Please read this patient brochure: *Saline Filled Breast Implant Surgery: Making an informed Decision*. This educational brochure, also available in electronic format at www.Mentorwwilc.com, provides you with information about the risks and benefits of saline breast implants. It is very important that you take the time to read and fully understand the brochure, consult with your surgeon, and ask any questions you may have.

*Financial assistance does not imply a loan to the patient, and instead means eligible payments under the warranty programs described in this brochure.

WHY IS A **WARRANTY** SO IMPORTANT?

Our **Saline Filled Breast Implant** guarantee

With a strong belief in the long-term integrity of our products, it's easy for us to stand behind them. That's why all recipients of MENTOR® Saline Filled Breast Implants are automatically enrolled in the **Mentor Lifetime Product Replacement Policy** at no additional charge. In addition, once you receive MENTOR® Breast Implants, you are automatically enrolled in the **Mentor Standard Advantage Limited Warranty**.

What this means to you is that should a confirmed deflation occur, you are eligible for one to two replacement breast implants of any size in a similar style...at no charge.

SUMMARY OF **WARRANTY** OPTIONS

The **Mentor Standard Advantage**
(\$1,200 toward out-of-pocket costs)

This warranty is **free of charge** to all patients who are implanted with MENTOR® Saline Filled Breast Implant products. Here is what's included:

- ➔ Automatic enrollment in our **Lifetime Product Replacement Policy****
- ➔ Enrollment in this warranty is FREE and automatic; registration is encouraged
- ➔ Coverage for 10 years, and up to \$1,200 financial assistance for operating room, anesthesia, and surgical charges not covered by insurance***
- ➔ Free contralateral (opposite side) implant replacement upon surgeon request

**Lifetime Product Replacement Policy: Mentor will provide replacement of a MENTOR® Product of any size in the same or similar style as the originally implanted product free of charge for the lifetime of the patient. Upon the surgeon's request, a different implant style may be selected (subject to a charge of the difference between product list prices).

***Operating room and anesthesia charges to be given payment priority. In order to qualify for financial assistance, you will need to sign a Release Form.

AND NOW THERE'S AN EXTRA REASON TO SAY 'YES' TO MORE BEAUTIFUL BREASTS.

The Optional **Mentor Enhanced Advantage** (\$2,400 toward out-of-pocket costs)

This **optional** warranty is available for saline filled breast implant products and, to be eligible, must be purchased for an enrollment **fee of \$100 within 45 days** from implantation.[†] The Enhanced Advantage replaces the Mentor Standard Advantage allowing for a total financial reimbursement of up to \$2,400. Here is what's included:

- ➔ Automatic enrollment in our **Lifetime Product Replacement Policy****
- ➔ Coverage for 10 years, and up to \$2,400 financial assistance for operating room, anesthesia, and surgical charges not covered by insurance***
- ➔ Free contralateral (opposite side) implant replacement upon surgeon request

A SPECIAL NOTE

For both **Mentor Standard Advantage** and **Mentor Enhanced Advantage** Limited Warranties, please be sure to maintain your own records to ensure validation of your enrollment, as it is possible your surgeon may not retain your records for the entire duration of the warranty.

[†]One warranty payout per enrollment fee; enrollment in the program for replacement device will require additional \$100 enrollment fee.

**Lifetime Product Replacement Policy: Mentor will provide replacement of a MENTOR® Product of any size in the same or similar style as the originally implanted product free of charge for the lifetime of the patient. Upon the surgeon's request, a different implant style may be selected (subject to a charge of the difference between product list prices).

***Operating room and anesthesia charges to be given payment priority. In order to qualify for financial assistance, you will need to sign a Release Form.

YOU MAY **BE WONDERING...**

What **products are covered** under this special warranty?

The Mentor Standard Advantage and Enhanced Advantage (if purchased) coverages apply to all MENTOR® Saline Filled Breast Implants that have been implanted in the United States and Puerto Rico after May 1, 2005;†† provided implants have been:

- ➔ Implanted in accordance with the Mentor package insert, current to the date of implantation, and other notifications or instructions published by Mentor
- ➔ Used by appropriately qualified, licensed surgeons, in accordance with accepted surgical procedures

What **events are covered**?

The Mentor Standard Advantage and Enhanced Advantage coverages apply to the following:

- ➔ Deflation due to crease fold failure, patient trauma, or unknown cause
- ➔ Loss of valve integrity

Other loss of shell integrity events also may be covered by this program. Mentor reserves the right to determine if specific, additional events are covered.

What **events are not covered**?

The Mentor Standard Advantage and Enhanced Advantage coverages do not apply to the following:

- ➔ Adverse reactions other than deflation
- ➔ Removal of intact implants due to capsular contracture, wrinkling, or rippling
- ➔ Loss of implant shell integrity resulting from reoperative procedures, open capsulotomy, or closed compression capsulotomy procedures
- ➔ Removal of intact implants for size alteration

††For saline breast implants implanted prior to this date, visit www.Mentorwllc.com for information regarding any applicable warranty terms.

FINANCIAL ASSISTANCE IS AVAILABLE, IF NEEDED. HERE'S HOW THE CLAIM PROCESS STARTS:



To file a Mentor Standard Advantage or Enhanced Advantage claim for product replacement and/or financial assistance, your surgeon must contact Mentor at 1-866-250-5115 prior to replacement surgery.

Required paperwork

For financial assistance claims, a patient-specific Release Form will be generated by Mentor that you must sign and return.

What your surgeon must send to **Mentor** and by when:

For either replacement or financial assistance claims, your surgeon must send the explanted (removed), decontaminated MENTOR® Breast Implant(s) within 60 days of the date of explantation to:

 **Mentor Worldwide LLC**
Product Evaluation Department
3041 Skyway Circle North
Irving, TX 75038 

Upon receipt, review and approval of the completed claim, including receipt of the explanted product and patient completion of a full general release, financial assistance will be issued.

This is a summary of Mentor Standard Advantage and Enhanced Advantage coverages. It is an overview only and not a complete statement of the program. You may obtain a copy of the complete Mentor Standard Advantage and Enhanced Advantage Limited Warranties for saline filled breast implants from your surgeon or by going to **www.mentorwwllc.com**.

Mentor reserves the right to cancel, change, or modify the terms of the Mentor Standard Advantage or Enhanced Advantage coverages. Any such cancellation, change, or modification will not affect the currently stated terms of the Mentor Standard Advantage and Enhanced Advantage coverages for those already enrolled.

Refer to **www.mentorwwllc.com** for full warranty coverage details.

MENTOR ENHANCED ADVANTAGE WARRANTY ENROLLMENT

The Mentor Enhanced Advantage coverage provides extra coverage **for \$100. ENROLL ONLINE.**

Go to **www.Mentorwllc.com** within 45 calendar days of your saline breast implant surgery.[§]

GET YOUR QUESTIONS ANSWERED AT THE CONSULTATION WITH YOUR SURGEON.

This brochure only provides a brief overview of the **Mentor Standard Advantage** and **Enhanced Advantage Limited Warranties** and is not intended to replace any discussion between you and your surgeon.

THIS IS A LIMITED WARRANTY ONLY AND IS SUBJECT TO THE TERMS AND CONDITIONS SET FORTH IN THIS DOCUMENT AND EXPLAINED IN GREATER DETAIL IN THE APPLICABLE MENTOR LIMITED WARRANTY. ALL OTHER WARRANTIES, WHETHER EXPRESSED OR IMPLIED, BY OPERATION OF LAW OR OTHERWISE, INCLUDING BUT NOT LIMITED TO IMPLIED WARRANTIES OF MERCHANTABILITY AND FITNESS ARE EXCLUDED.

THIS REMEDY IS THE SOLE AND EXCLUSIVE REMEDY AVAILABLE. MENTOR SHALL NOT BE LIABLE FOR ANY INCIDENTAL, INDIRECT, CONSEQUENTIAL OR SPECIAL LOSS, DAMAGE OR EXPENSE ARISING DIRECTLY OR INDIRECTLY FROM THE USE OF THESE PRODUCTS. MENTOR NEITHER ASSUMES NOR AUTHORIZES ANY OTHER PERSON TO ASSUME FOR IT, ANY OTHER OR ADDITIONAL LIABILITY OR RESPONSIBILITY IN CONNECTION WITH THESE PRODUCTS.

THE TERMS IN EFFECT WHEN ORIGINAL IMPLANTATION WAS COMPLETED WILL APPLY AT THE TIME OF CLAIM.

[§]Valid in the United States and Puerto Rico

THE MENTOR LIMITED WARRANTY PROGRAMS ARE DESIGNED FOR YOUR PEACE-OF-MIND

CHECK OUT THE ADVANTAGES:

- ➔ Automatic enrollment in our **Lifetime Product Replacement Policy**** for any MENTOR® Saline Filled Breast Implant
- ➔ 10 years of financial assistance from the date of implant up to \$1,200 in **The Mentor Standard Advantage Program** and up to \$2,400 in **The Enhanced Advantage Program**
- ➔ Free contralateral (opposite side) implant replacement upon surgeon request

MENTOR® Saline-filled Breast Implants are indicated for breast augmentation - in women who are at least 18 years old for Saline Implants - or for breast reconstruction.

Breast implant surgery should not be performed in women:

- With active infection anywhere in their body
- With existing cancer or pre-cancer of their breast who have not received adequate treatment for those conditions
- Who are currently pregnant or nursing.

There are risks associated with breast implant surgery. You should be aware that breast implants are not lifetime devices and breast implantation is likely not a one-time surgery.

Detailed information regarding the risks and benefits associated with MENTOR® Breast Implants is provided in a brochure, *Saline-Filled Breast Implants, Making an Informed Decision* available from your surgeon or on line at www.mentorwwllc.com.

It is important that you read and understand these brochures when considering MENTOR® Breast Implants.

****Lifetime Product Replacement Policy:** Mentor will provide replacement of a MENTOR® Product of any size in the same or similar style as the originally implanted product free of charge for the lifetime of the patient. Upon the surgeon's request, a different implant style may be selected (subject to a charge of the difference between product list prices).

201 Mentor Drive
Santa Barbara, CA 93111 USA
(805) 879-6000
www.mentorwwllc.com

© Mentor Worldwide LLC 2015 027056-141230

